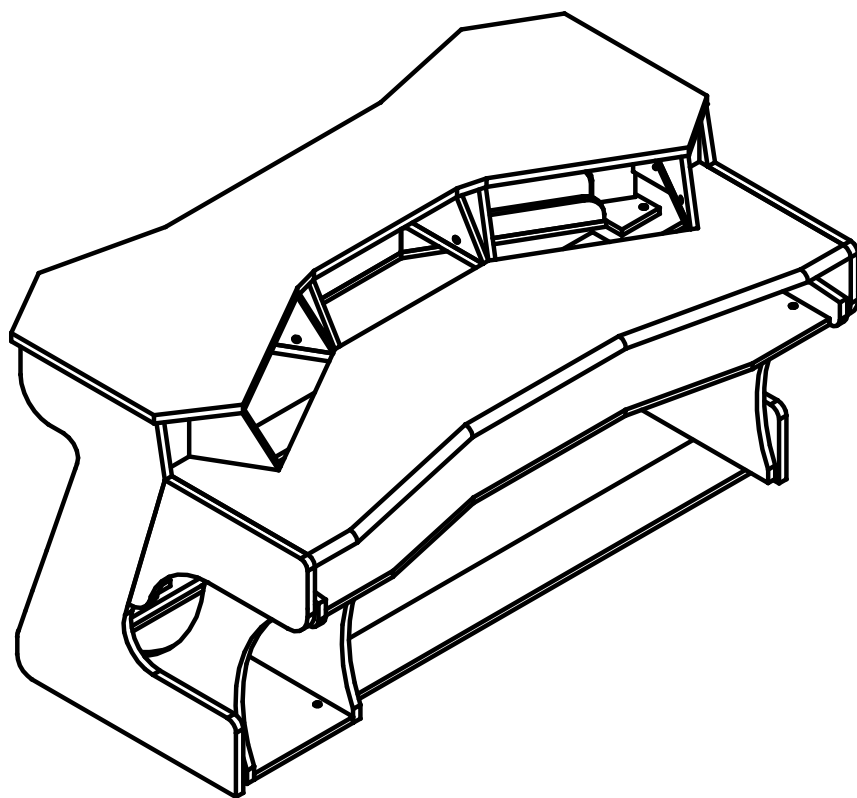


Zaor[®]

BUDGET CUSTOM DESIGN



Miza x2

Assembly Instructions

Assembly Manual

Thank you for choosing a piece of Zaor studio furniture,
which will hopefully make your life easier, more ergonomic and improve the looks of your workspace.

Before you can enjoy the comfort of your new acquisition you need to assemble it.

We have tried to give you as much detail as needed and as little as possible.

Should you run into any difficulty with this assembly you can get in touch with us via
sales@zaorstudiofurniture.com to set up a Skype session or phone call.

Here is a general instruction on how to use the furniture assembly kits:

- 1) Insert and screw in the system bolt(s) into the socket(s) already present on the panel(s)
- 2) Tighten ever so lightly, if using a screwdriver toward the end, do not turn more than 30°!
- 3) Assemble with the connecting panel, aligning the bolts with the round holes in the latter
- 4) Insert the eccentric connector(s) into the round hole(s) and tighten clockwise with a flat screwdriver or a 4mm Allen key (about 90°)



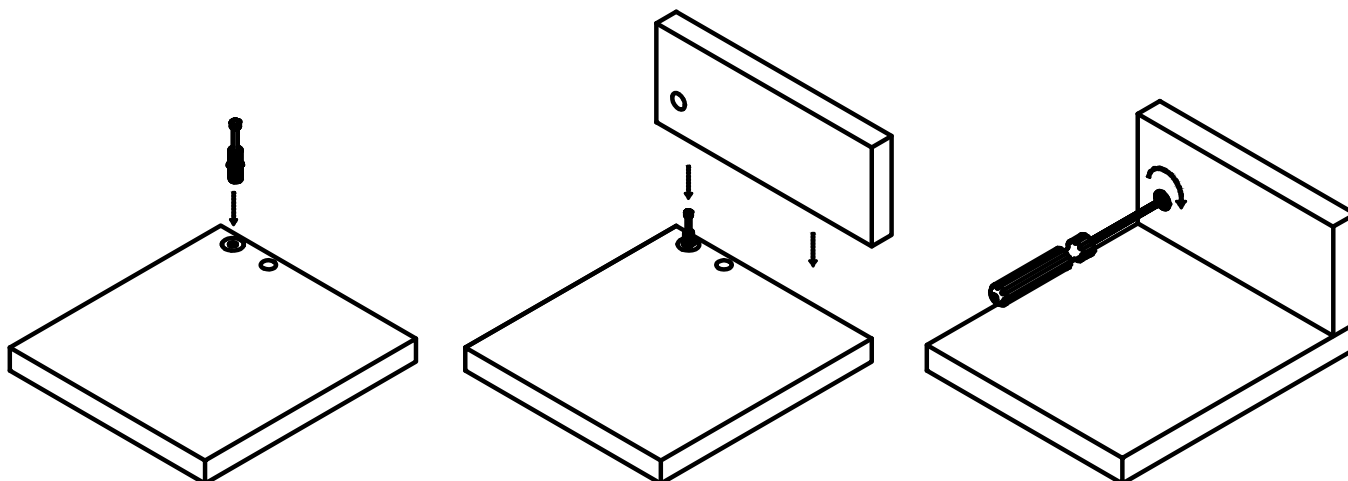
Expanding socket



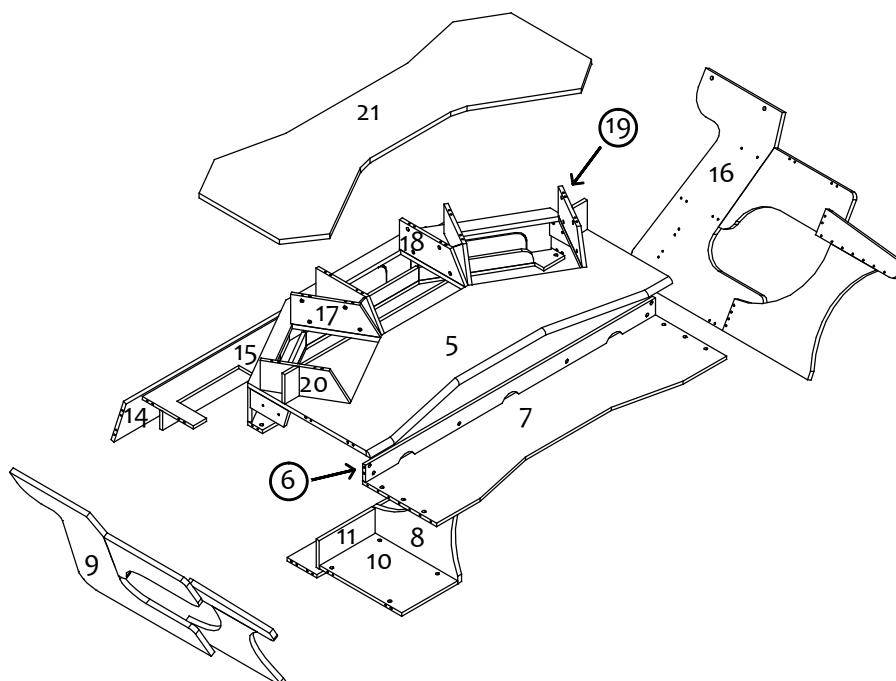
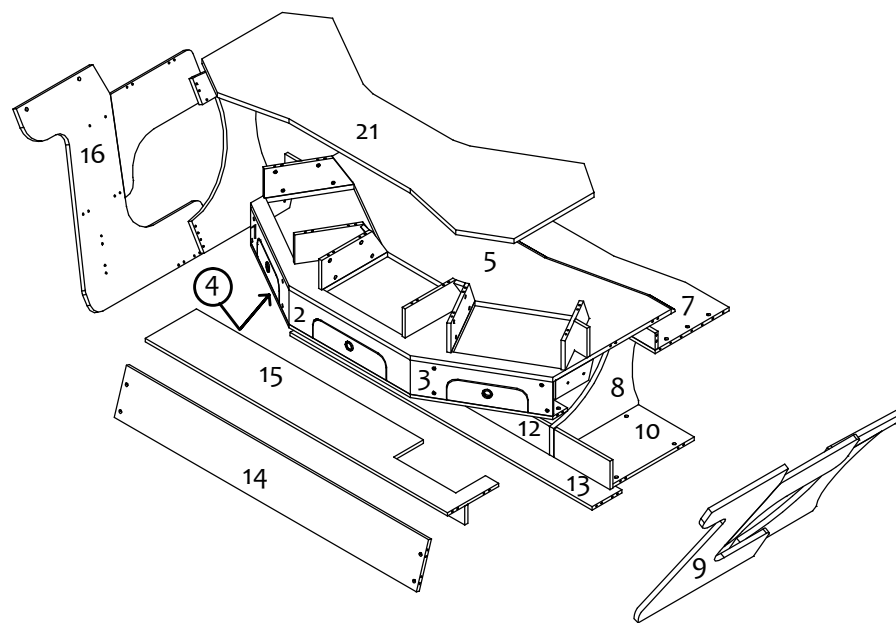
System bolt



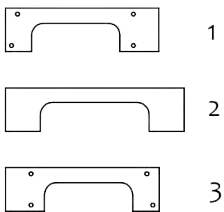
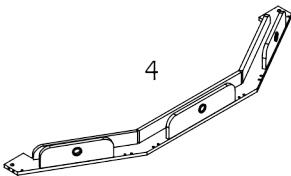
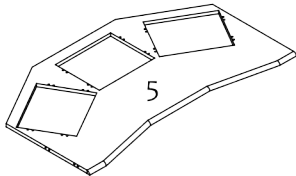
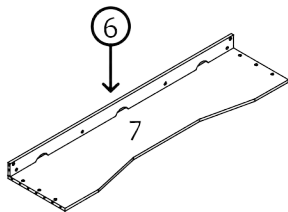
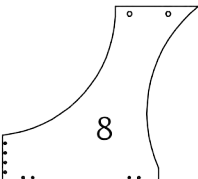
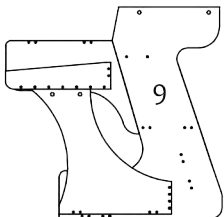
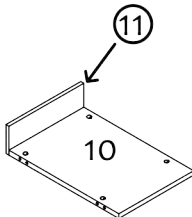
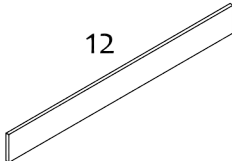
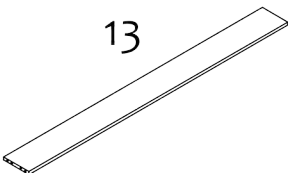
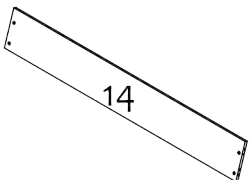
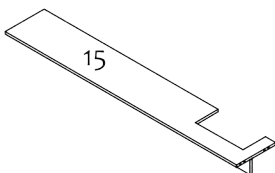
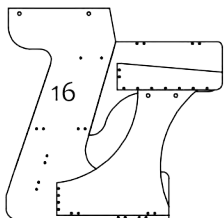
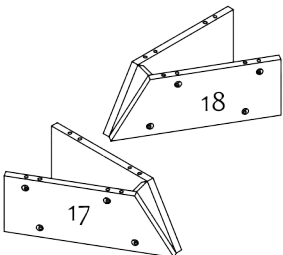
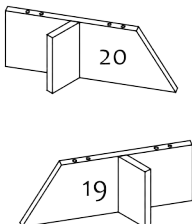

Eccentric fitting



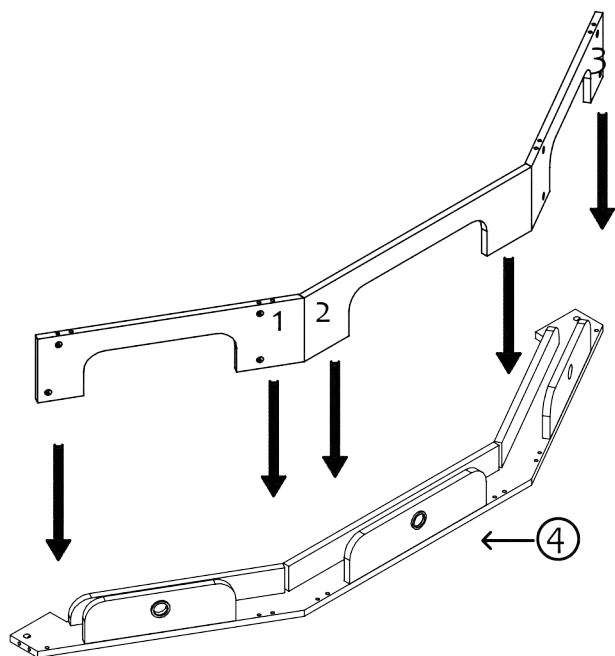
Assembly Manual



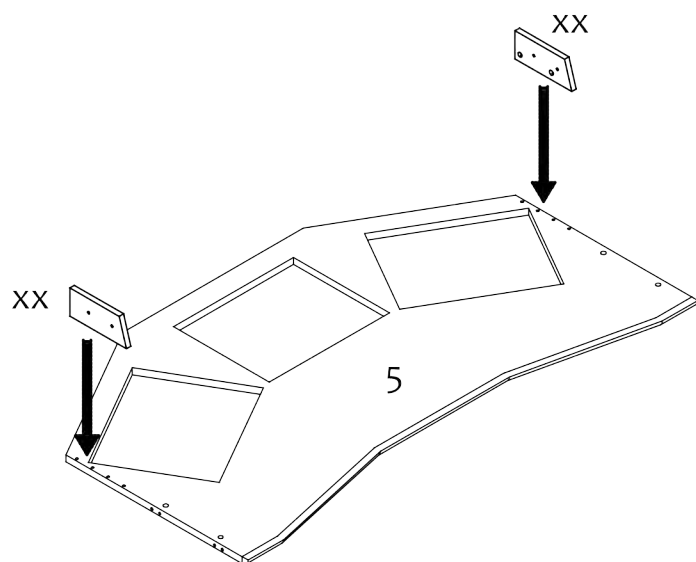
Assembly Manual

<p>Parts n° 1-2-3</p> 	<p>Part n° 4 Cable tray</p> 	<p>Part n° 5 Desk-top</p> 	<p>Parts n° 6-7 Keyboard draw-out bottom and back</p> 
<p>Part n° 8 Central divider for draw-out</p> 	<p>Part n° 9 Left side part</p> 	<p>Parts n° 10 - 11 Bottom and Back panel for CPU</p> 	<p>Part n° 12 Stabilising crossbar draw-out</p> 
<p>Part n° 13 Floor crossbar/footrest</p> 	<p>Part n° 14 Back stabilising crossbar</p> 	<p>Part n° 15 Shelf for HDD etc.</p> 	<p>Part n° 16 Right Side part</p> 
<p>Parts n° 17 - 18 Wedge dividers for Racks</p> 	<p>Parts n° 19 - 20 Dividers</p> 	<p>Part n° 21 Top bridge</p> 	

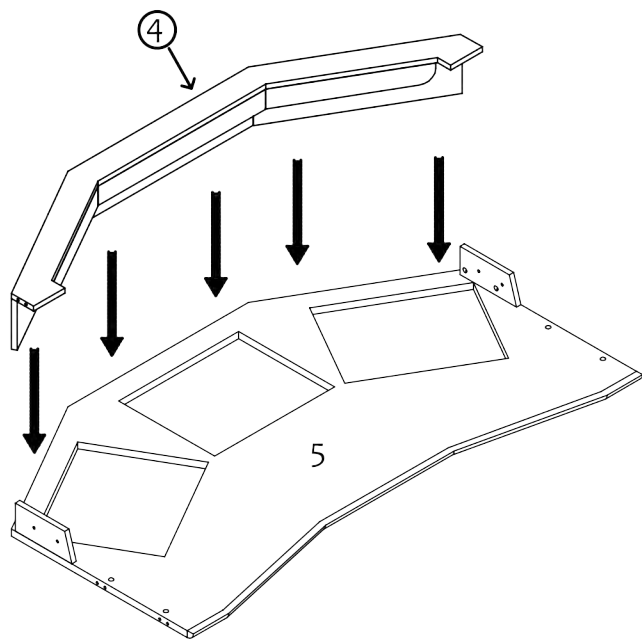
Assembly Manual



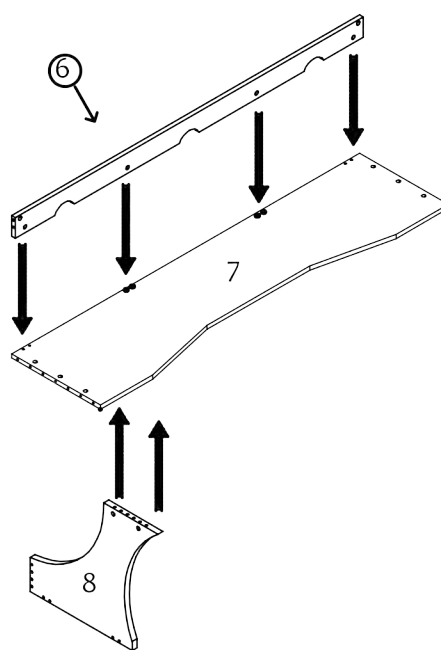
STEP 1 (module 1) Put part n° 4 down flat and add system bolts (page 2), lower down parts n°1 ,2+ 3. Fixate using the excenters as shown in page 2.



STEP 2 Put the desktop n° 5 face down, flat on the ground. Using assembly kits add the two parts XX on either side.

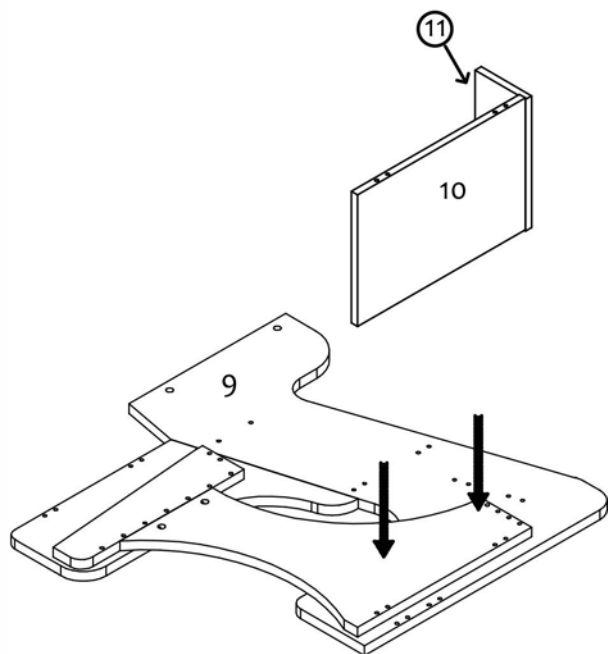


STEP 3 (module 2) with desk top n° 5 still lying flat, add the cable tray (module 1) previously assembled using the assembly kits as shown in page 2.
N.B. You are looking at the underneath of the desktop

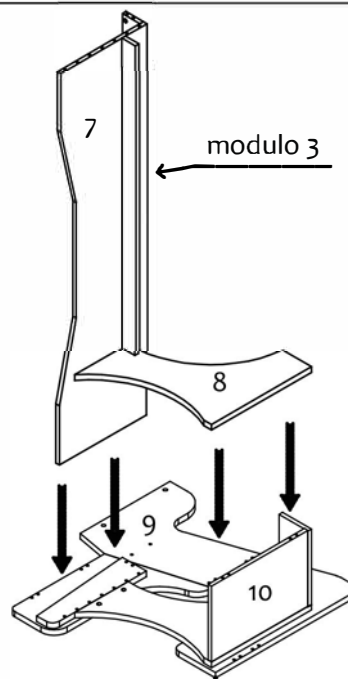


STEP 4 (module 3)
To mount module 3 (keyboard tray) join parts n° 7 and n°6 on top and add part n° 8 from below using assembly kits.

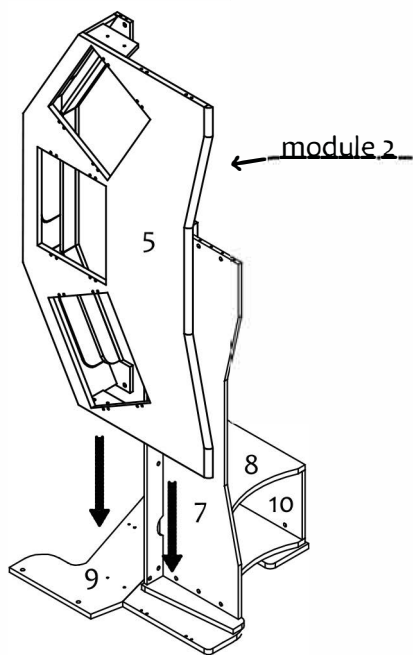
Assembly Manual



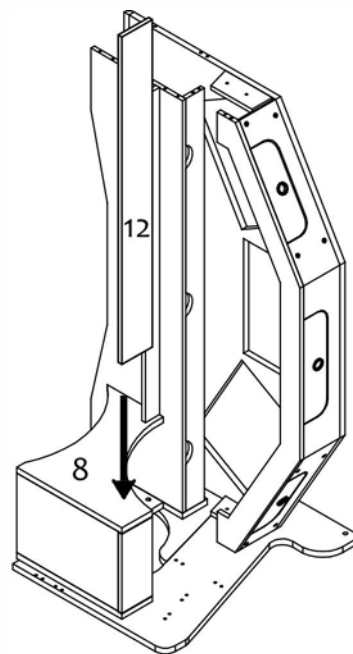
STEP 5 Lay side part n° 9 face down on the ground (we recommend using carpet or soft surface to avoid scratches) and lower down the parts n° 10 and 11 and fixate using wooden pegs.



STEP 6 Add more bolts. Lower down module 3 onto parts n° 9 - 10 - 11 previously assembled. Be careful to align all the bolts and holes and fix using excenters.

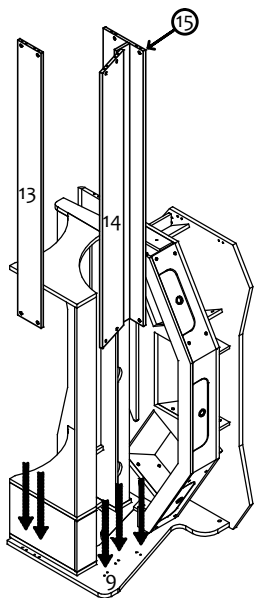


STEP 7 GET SOME HELP!
Lower down module 2 onto the left side assembly. Align bolts and holes carefully with part n° 9. After this screw the small part XX from module 2 to part n° 9 using M6X30 screws requiring an Allen key.

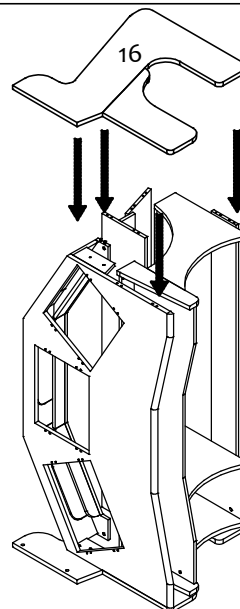


STEP 8 Fixate part n° 12 to part n° 8 aligning bolts and holes and tighten with excenters.

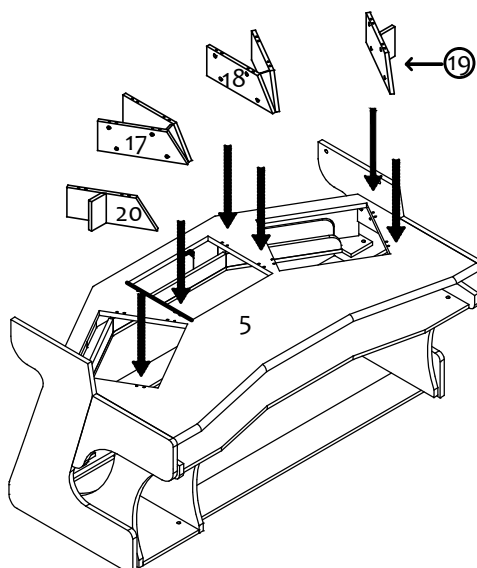
Assembly Manual



STEP 9
Repeat step 8 for parts n° 13 , 14 and 15 attaching them to part n° 9.

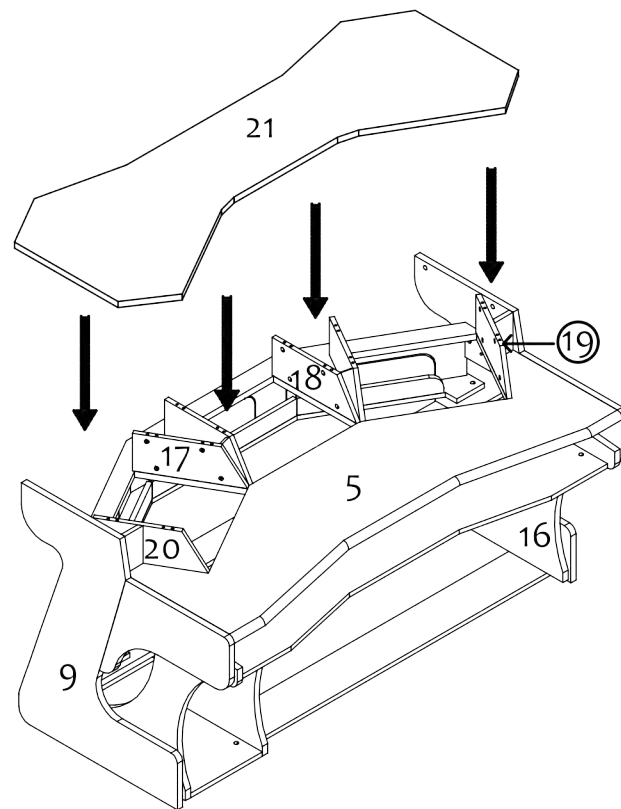


STEP 10
Lower down right side part n° 16 after having attached all system bolts. Align each and every bolt with the corresponding hole and gently press down. Tighten with execenters.



STEP 11 GET SOME HELP (MIN 2 PEOPLE)
put the desk upright as shown and attach the rack dividers n° 17 - 18 - 19 - 20 onto the desktop n° 5 using the predrilled holes and previously installed system bolts. Tighten with execenters..

Assembly Manual



STEP 12

Add bolts to part n° 21. Finish off the assembly lowering down part n° 21 onto 17 - 18 - 19 - 20 plus the side parts n° 9 - 16 carefully aligning bolts and holes and tighten with excenters. DONE! NOW YOU CAN POP SOME BUBBLY... CHEERS AND ENJOY

MATERIALS USED

Melaminated chipboard panels 18 and 25 mm plus solid wood (ash or oak).
Metal assembly kits. Aluminum Isolation kit for speakers

PACKING LIST

- 21 wood parts;
- 4 drawer rails;
- 86 assembly kits;
- 4 screws M6 x 30;
- 48 Rack nuts, washers and screws;
- 2 IsoPlanes feat. Aperta 150 isolators for speakers

Maintenance and cleaning instructions

- Use a soft and humid cloth or specific wood cleaners;
- avoid using abrasive cleaning materials;

We recommend 2 to 3 people being present for the assembly of this desk. We know you can't wait to put it together, but unless you are a super hero, this is a tough one. So do get some help!